



*Photo courtesy of Case Western University*

**Earl W. SUTHERLAND, JR.**  
Nobel Prize in Medicine

**Earl W. SUTHERLAND, JR.** 1915-1974

- Born in Burlingame and graduated from Burlingame Jr. / Sr. High in 1932.
- Earned a degree in chemistry from Washburn University, Topeka, in 1937.
- Was a doctor and surgeon in World War II.
- After WWII he went into pharmacology, a science which studies the makeup and uses of drugs and the reasons they work.

**EXTRA COOL:** Awarded the Nobel Prize in Medicine in 1971 because of his discoveries about hormones, which are chemical substances that regulate almost every body function.

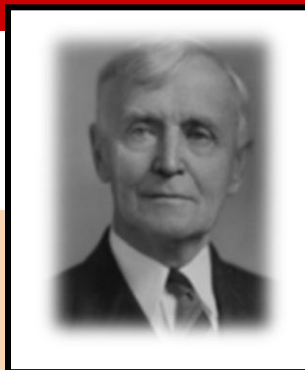


Project of the Ad Astra Kansas Initiative  
[www.adastra-ks.org](http://www.adastra-ks.org)

2011

**SCIENCE in KANSAS**  
*150 years and counting*

**Kansas Sesquicentennial 2011**



**Charles O. Swanson**  
GRAIN SCIENCE

Kansas State University



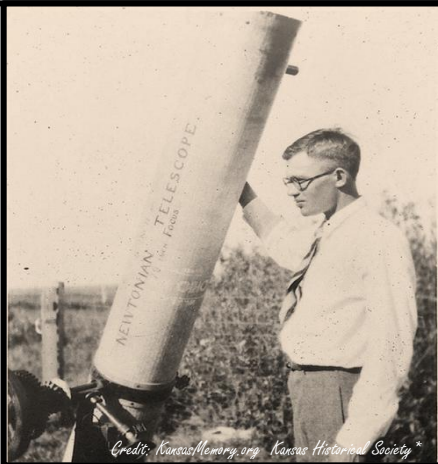
**Charles O. Swanson**

- Born in Sweden in 1869.
- Became the head of the KSU Milling Department in 1923. Through his efforts to obtain industrial equipment donations, the department became famous worldwide.
- Led research into the makeup and function of wheat flour which resulted in Kansas wheat quality being known as world-class.
- Combined milling, baking and feed technologies in one department at KSU, making it the only such department at a university in the entire U.S. (Now the Department of Grain Science and Industry.)

**EXTRA COOL:** Given the American Association of Cereal Chemists highest award in 1938.



Project of the Ad Astra Kansas Initiative  
[www.adastra-ks.org](http://www.adastra-ks.org)



*Credit: KansasMemory.org Kansas Historical Society*

**Clyde TOMBAUGH**  
Astronomy

*\*Copy and reuse restrictions apply*

**Clyde TOMBAUGH** 1906-1997

- Lived on a farm near Burdett.
- Did not have money for college so he studied math and science on his own.
- Built his own telescope when he was 20, even grinding the lenses himself.
- Sent drawings he made of Jupiter and Mars using his telescope to Lowell Observatory in Arizona and was offered a job.
- Discovered Pluto in 1930. Earned degrees at the University of Kansas.

**EXTRA COOL:** A memento of Tombaugh is on board the New Horizons spacecraft which will fly by Pluto in 2015.



Project of the Ad Astra Kansas Initiative  
[www.adastra-ks.org](http://www.adastra-ks.org)

2011

**SCIENCE in KANSAS**  
*150 years and counting*



*Photo courtesy of Samantha Wisely*

**Samantha WISELY**  
Biology  
Kansas State University

**Samantha WISELY** current

- Is an associate professor of biology with expertise in wildlife ecology and disease ecology at KSU.
- Studies how changes in the environment affect animal populations.
- Has been a member of the Black-footed Ferret Recovery Team for more than 12 years. An endangered species in North America, black-footed ferrets are important to the prairie ecosystem.

**EXTRA COOL:** Recently received a \$750,000 grant to promote undergraduate research by underrepresented students at KSU.



Project of the Ad Astra Kansas Initiative  
[www.adastra-ks.org](http://www.adastra-ks.org)

2011

**SCIENCE in KANSAS**  
*150 years and counting*