

## Kansas Sesquicentennial 2011

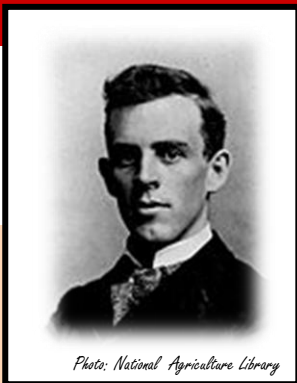


Photo: National Agriculture Library

### DAVID FAIRCHILD

BOTANY

U. S. Department of Agriculture



### David Fairchild 1869-1954

- He grew up in Manhattan.
- Earned degrees in agriculture from Kansas State University.
- Became a plant explorer for the USDA, traveling the world looking for useful crops to bring back to America.
- Introduced alfalfa, soybeans, pistachios, dates, avocados, nectarines to the U.S. as well the flowering cherry trees that are famous in Washington D.C.

**EXTRA COOL:** His father-in-law was Alexander Graham Bell, the inventor of the telephone.

★ Project of the Ad Astra Kansas Initiative  
www.adastra-ks.org

## Kansas Sesquicentennial 2011

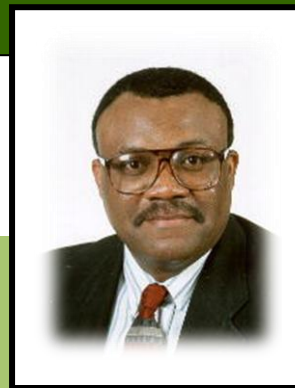


Photo credit: CNCMM website

### CHRISTOPHER IBEH

CHEMICAL ENGINEERING

Pittsburg State University



### Christopher Ibeh (pronounce e-bay)

- Born in Nigeria, Africa's top oil producing country.
- Interested in oil, he earned degrees in chemical and natural gas engineering.
- Became interested in plastics, which are made of oil and gas.
- Has been a professor of plastics engineering technology at Pittsburg State University, Pittsburg, Kansas for 20 years.
- Working on nanotechnology to develop plastic nanocomposites that are fire and explosion-proof for the United States Navy to use in building ships.

**EXTRA COOL:** Ibeh is organizing a Nanotechnology Entrepreneurship Forum at PSU.

★ Project of the Ad Astra Kansas Initiative  
www.adastra-ks.org



Courtesy NanoScale Corporation

### Olga KOPER

Chemistry

NanoScale Corporation, Manhattan

### Olga KOPER current

- Liked science, even as a child.
- Earned degree from Kansas State University in inorganic chemistry.
- Working at the level of molecules and atoms she helped develop materials to adsorb and destroy toxic chemicals, neutralize odors or do environmental cleanup.
- First Responders use products made from these materials-- like sprays, powders or protective clothing-- to keep themselves safe when they come in contact with dangerous chemical or biological substances.

**EXTRA COOL:** "The periodic table is like a playground in which you can build new compounds and develop new applications. It's been fun!" says Koper.

★ Project of the Ad Astra Kansas Initiative  
www.adastra-ks.org

## Kansas Sesquicentennial 2011



Photo Courtesy Brian McClendon

### BRIAN McCLENDON

ENGINEERING

Google Earth



### Brian McClendon current

- Went to Hillcrest Elementary, West Jr. High and Lawrence High School. Earned degree in electrical engineering from KU in 1986.
- Formed a company which developed software to create video games and other 3-D graphics.
- Co-inventor of the computer search tool now known as Google Earth which uses satellite images and other data to let users view 3-D images of any place on earth.
- Leads the Geo group at Google which is also responsible for Google Maps, Streetview, Sketchup, Sky, Moon, Mars and Ocean.

**EXTRA COOL:** You can use Google Earth to zoom in and find your house and then use Sketchup to make a 3D model of it.

★ Project of the Ad Astra Kansas Initiative  
www.adastra-ks.org

2011 SCIENCE in KANSAS  
150 years and counting